



Milk tea



ICED HOT
M L M

- 1** Ten milk tea 500 580 520
- 3** Brown sugar milk tea 600 680 620
- Small taro ball milk tea 600 680 620
- Caramel milk tea 580 660 600
- Chinese mesona jelly milk tea (Chinese mesona jelly) 580 660 600
- Oolong milk tea 580 660 600
- Jasmine milk tea 580 660 600
- Chai milk tea 580 660 600

Milk

(Can be changed from milk to soy milk)



ICED HOT
M L M

- 2** Ten brown sugar cream milk 680 760 700
- 1** Brown sugar milk 630 710 650
- Taro milk 680 760 700
- Sweet potato milk 680 760 700
- Chocolate cocoa milk 580 660 600
- Strawberry milk 580 660
- Matcha milk 580 660 600

Taiwanese tea

(with nata de coco)



ICED
M L

- Grapefruit tea (with nata de coco & pulp) 680
- Pineapple & passion fruit tea (with nata de coco & pulp) 680
- Mango jasmine tea (with pineapple nata de coco) 580 660
- Peach oolong tea (with pineapple nata de coco) 580 660
- Passion fruit jasmine tea (with pineapple nata de coco) 580 660

Fruit juice



ICED
M L

- Mango juice (with pineapple nata de coco) 580 660
- Mango lassi 580 660
- Strawberry lassi 580 660

Smoothie



ICED
M L

- Taiwan sweets smoothie (Milk tea smoothie/Small taro ball/Tofu pudding/Chinese mesona jelly) 750 830
- Ten milk tea smoothie 630 710
- Summer only** Mango and passion fruit smoothie (Mango smoothie/Mango/ passion fruit syrup) 680 760

Choose your sweetness level Can be changed from milk to soy milk
*Pictures are for reference only.*Prices are tax included*Some items may not be available at some store.*The items offered may change due to the weather, purchases, sales conditions, etc.

甜點菜單

Sweets menu



All sweets take out ok

Healthy sweet tofu pudding



Special tofu pudding

Tofu pudding/Sweet potato Taro/Red beans/Peanuts/Coix seeds Chinese mesona jelly Tapioca/Brown sugar smoothie

840



Taro ball tofu pudding

Tofu pudding/Taro ball Tapioca/Brown sugar smoothie

780



Peanuts tofu pudding

Tofu pudding/Peanuts Red beans/Tapioca Brown sugar smoothie

780



Healthy sweets tofu pudding

Tofu pudding Tapioca/Brown sugar smoothie

620

Taro ball



Taro ball & sweet potato

Taro ball/Sweet potato Taro/Tapioca Brown sugar smoothie

780



Taro ball & beans

Taro ball/Red beans Coix seeds/Peanuts/Tapioca Brown sugar smoothie

780



Taro ball & chinese mesona jelly

Taro ball/Chinese mesona jelly/Coffee fresh/Tapioca Brown sugar smoothie

740

1 Choose your sweetness level

- More sweet
- Normal sweet
- Less sweet
- No sweet

2 Choose your ice level

- Normal ice
 - Less ice
 - No ice
- M/L +0 M/L +0 M+80/L+100

+ Additional toppings

- Tapioca double 80
 - Chinese mesona jelly 80
 - Small taro ball 120
 - Whipped cream 120
 - Mango ice cream 120
 - Mango 120
- [Summer only] [Summer only]

- Pineapple nata de coco — 80
- Tofu pudding — 120
- Almond tofu pudding — 120
- Taro ball — 120
- Taro — 120
- Sweet potato — 120
- Red beans — 120
- Peanuts — 120
- Coix seeds — 120

Seasonal Limited Menu

All menu contains tapioca balls



Taiwanese snow ice

Seasonal & Dine-in Only

No.1 Seller



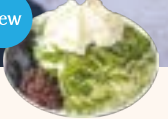
Mango snow ice

Milk snow ice
×
Mango smoothie

Mango/Mango ice cream
Mango syrup/Tapioca

1120

New



Matcha snow ice

Milk snow ice
×
Brown sugar smoothie

Matcha powder/Red beans
Chinese mesona jelly/Whipped cream/Tapioca

1120



Strawberry snow ice

Milk snow ice
×
Milk tea smoothie

Strawberry sauce/Whipped cream
Nata de coco/Condensed milk/Tapioca

1120



Seasonal & Dine-in Only

Mango tofu pudding

Tofu pudding/Mango
Mango sauce/Mango ice cream
Nata de coco/Mango smoothie/Tapioca

¥ 780



Mango & passion fruit smoothie

Mango smoothie/Mango
passion fruit syrup

☑ M:680/L:760



Mango soda

Mango ice cream
Mango/Mango smoothie

☑ M:680



Recommended Fruit Sodas

New



Strawberry soda

with nata de coco & pulp

☑ M:680



Pineapple & passion fruit soda

with nata de coco & pulp

☑ M:680



Lemon soda

with nata de coco

☑ M:680

TABLE FOR TWO

台湾甜商店 × TABLE FOR TWO

We support and are actively involved in the "TABLE FOR TWO" program, which aims to solve the global issues of hunger and obesity.



¥20



When you purchase the designated drink, a ¥20 donation will be made through "TABLE FOR TWO" to provide one school meal for children in developing countries.

One designated drink

One school meal portion

Designated products

Does not include tapioca.



Peach oolong tea



Jasmine tea

☑ M:430/L:510
☑ H:450

Taiwanese castella



FULL SIZE

Castella plate **In-store only**



HALF SIZE

Taiwanese plane castella plate
Taiwanese plane castella/Whipped cream/Caramel sauce/Tapioca

Full size 800

Half size 480



No.1 Seller

Taiwanese castella **Takeout OK**



Plane 630



Earl grey 690

※Pictures are for reference only.

台湾 美食 菜单

Taiwanese food menu



Salted
soybean milk
600

Beef noodles
1,380

Braised pork rice
980

No.1
Seller



In-store only

Taiwanese
gorgeous set meal 1,680

(selectable mini desserts • weekly Taiwanese tea with free refills)

Value set meal with beef noodles and braised pork rice



Beef noodles
set meal 1,680

(selectable mini desserts • weekly Taiwanese tea with free refills)

In-store only Single dish 1,380



Soupless noodles
set meal 1,280

(soup • selectable mini desserts • weekly Taiwanese tea with free refills)

Take out available Single dish 980



Braised pork rice
set meal 1,280

(soup • selectable mini desserts • weekly Taiwanese tea with free refills)

Take out available Single dish 980



In-store only

Taiwanese
breakfast set meal 1,380

(selectable mini desserts • weekly Taiwanese tea with free refills)

Value set meal with salted soybean milk and braised pork rice!



Salted soybean milk
set meal 900

(selectable mini desserts • weekly Taiwanese tea with free refills)

Take out available Single dish 600



Please choose one mini
dessert for your set meal.

Mini desserts for selection



*Also to Single dish Includes weekly Taiwanese tea with free refills. *Pictures are for reference only. *Prices are tax included
*The items offered may change due to the weather, purchases, sales conditions, etc.



過敏反應

珍珠奶茶類



	ICED		HOT
	M	L	M
👑 (甜商店特製) 珍珠奶茶	500	580	520
👑 黑糖珍珠奶茶	600	680	620
小芋圓珍珠奶茶	600	680	620
焦糖珍珠奶茶	580	660	600
仙草珍珠奶茶 <small>(仙草凍)</small>	580	660	600
珍珠烏龍奶茶	580	660	600
珍珠茉莉花茶	580	660	600
印度香料珍珠奶茶	580	660	600

鮮奶類

(○可將鮮奶改為豆乳)



	ICED		HOT
	M	L	M
👑 鮮奶油黑糖鮮奶	680	760	700
👑 黑糖鮮奶	630	710	650
芋頭鮮奶	680	760	700
👑 地瓜鮮奶	680	760	700
巧克力牛奶	580	660	600
👑 草莓鮮奶	580	660	600
👑 抹茶鮮奶	580	660	600

台灣特色茶類



	ICED	
	M	L
👑 葡萄柚茉莉花茶 <small>(含椰果/葡萄柚果肉)</small>	680	
鳳梨百香果茉莉花茶 <small>(含椰果/鳳梨果肉/百香果果肉)</small>	680	
芒果醬茉莉花茶 <small>(含椰果)</small>	580	660
👑 白桃烏龍茶 <small>(含椰果)</small>	580	660
百香果醬茉莉花茶 <small>(含椰果)</small>	580	660

果汁、優格



	ICED	
	M	L
👑 芒果果汁 <small>(含椰果)</small>	580	660
芒果優格飲	580	660
草莓優格飲	580	660

冰沙類



	ICED	
	M	L
👑 台灣滿足冰沙 <small>(奶茶冰沙/小芋圓/豆花/仙草凍)</small>	750	830
奶茶冰沙	630	710
👑 熱情芒果冰沙 <small>(芒果冰沙/芒果果肉/百香果醬)</small>	680	760

📦 可調節甜度 🕒 可將鮮奶改為豆乳

※照片僅供參考※價格皆為含稅※依照店鋪不同有些商品可能無法提供
※因天氣、運送因素、販售狀況等，可能會調整提供的商品內容

甜點菜單



TAKE OUT
甜點都可外帶

杏仁豆花

柔軟絲滑的口感及帶有微甜的輕窈杏仁香，入口的瞬間就包覆味蕾讓人難忘



👑 芋圓杏仁豆花 <small>杏仁豆花/芋圓/芋泥珍珠/黑糖蜜冰沙</small>	👑 草莓杏仁豆花 <small>杏仁豆花/草莓醬汁/椰果珍珠/黑糖蜜冰沙</small>	杏仁豆花 <small>杏仁豆花/枸杞/珍珠黑糖蜜冰沙</small>
780	780	620

傳統豆花

使用有機豆漿現做的豆花，不但低卡路里且高蛋白質是台灣國民人氣甜點!

👑 綜合豆花 <small>豆花/地瓜/芋圓/紅豆花生/薏仁/仙草凍珍珠/黑糖蜜冰沙</small>	芋圓豆花 <small>豆花/芋圓/珍珠黑糖蜜冰沙</small>	花生豆花 <small>豆花/花生/紅豆/珍珠黑糖蜜冰沙</small>	傳統豆花 <small>豆花/珍珠黑糖蜜冰沙</small>
840	780	780	620

九份芋圓

台灣觀光地「九份」的名產，使用地瓜和芋頭搓成的Q彈糰子，讓人忍不住一口接一口!



👑 芋圓 芋滿足 <small>芋圓/地瓜/芋圓/珍珠黑糖蜜冰沙</small>	芋圓 豆滿足 <small>芋圓/紅豆/薏仁/花生珍珠/黑糖蜜冰沙</small>	芋圓仙草滿足 <small>芋圓/仙草凍/奶精珍珠/黑糖蜜冰沙</small>
780	780	740

1 可調節甜度

👑 多糖	📦
正常甜	📦
微糖	📦
無糖	📦

2 冰量調整

正常	少冰	去冰
M/L+0	M/L+0	M+80/L+100

➕ 追加小料

👑 珍珠加倍	👑 仙草凍	👑 小芋圓	鮮奶油	👑 芒果冰	👑 芒果果肉
80	80	120	120	120	120
				【夏季限定】	【夏季限定】

椰果	80
豆花	120
杏仁豆花	120
芋圓	120
芋頭	120
地瓜	120
紅豆	120
花生	120
薏仁	120

季節限定菜單

所有商品都含珍珠



台灣綿綿冰

季節限定 & 僅限堂食

人氣 No.1



芒果綿綿冰

牛奶綿綿冰 × 芒果冰沙
芒果果肉/芒果冰/芒果果醬/珍珠
1120

推薦



草莓綿綿冰

牛奶綿綿冰 × 奶茶冰沙
草莓醬汁/鮮奶油/椰果/煉乳/珍珠
1120

新登場



抹茶綿綿冰

牛奶綿綿冰 × 黑糖蜜冰沙
抹茶粉/紅豆/仙草凍/鮮奶油/珍珠
1120



珍珠
分開附上

推薦芒果類



季節限定 & 僅限堂食

芒果豆花

豆花/芒果果肉/芒果醬/芒果冰
椰果/芒果冰沙/珍珠

¥ 780



熱情芒果冰沙

芒果冰沙/芒果果肉
百香果醬

☐ M:680/L:760



解放芒果蘇打

含芒果冰/芒果果肉
芒果冰沙

☐ M:680

推薦水果蘇打類



新登場



草莓蘇打

含椰果/草莓果肉

☐ M:680



鳳梨百香果蘇打

含椰果/鳳梨果肉/百香果果肉

☐ M:680



檸檬蘇打

含椰果

☐ M:680

※照片僅供參考※價格皆為含稅※因天氣、運送因素、販售狀況等，可能會調整提供的商品內容

TABLE FOR TWO

台灣甜商店 × TABLE FOR TWO

我們支持並積極參與「TABLE FOR TWO」計劃，該計劃旨在解決全球飢餓和肥胖問題。



指定飲料一杯

¥20



一份校餐

購買指定飲料後，將透過「TABLE FOR TWO」捐贈20日元，為發展中國家的兒童提供一頓校餐。

指定產品



白桃烏龍茶
(不含珍珠)



茉莉花茶
(不含珍珠)

☐ M:430/L:510
H:450

古早味蛋糕



FULL SIZE

古早味蛋糕盤 僅限內用



HALF SIZE

焦糖鮮奶油古早味蛋糕
古早味蛋糕/鮮奶油/焦糖醬/珍珠

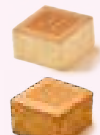
整份 800

半份 480



人氣 No.1

古早味蛋糕 可以外帶



原味 630



伯爵茶 690

※照片僅供參考

台灣 美食 菜單

各商品限量販售



鹹豆漿 600

牛肉麵 1,380

滷肉飯 980

人氣
No.1



台灣滿意套餐 僅限內用

可選一份迷你甜點，台灣茶無限暢飲 **1,680**

可一口氣嘗試牛肉麵，滷肉飯的豪華套餐



牛肉麵套餐

可選一份迷你甜點，台灣茶無限暢飲 **1,680**

僅限內用 單品 **1,380**



滷肉乾麵套餐

含湯，可選一份迷你甜點，台灣茶無限暢飲 **1,280**

可外帶 單品 **980**



滷肉飯套餐

含湯，可選一份迷你甜點，台灣茶無限暢飲 **1,280**

可外帶 單品 **980**



台灣早餐套餐

可選一份迷你甜點，台灣茶無限暢飲 **1,380**

豆漿湯與滷肉飯套餐！



鹹豆漿套餐

可選一份迷你甜點，台灣茶無限暢飲 **900**

可外帶 單品 **600**



套餐請選擇一份迷你甜點

可選擇迷你甜點！



Taiwan ten cafe

[DRINK] Allegies information

Category	Product name	8 specified ingredients								20 equivalent specified ingredients																					
		egg	milk	wheat	buck wheat	peanut	shrimp	crab	walnut	sesame	soybean	gelatin	orange	peach	apple	kiwi fruit	banana	almond	abalone	squid	salmon roe	cashew nut	beef	salmon	mackerel	chicken	pork	matsutake mashroom	yam	caffeine	
MILKTEAS	Ten milk tea		●																											●	
	Brown sugar milk tea		●																											●	
	Taiwan sweets milk tea		●																											●	
	Small taro ball milk tea		●																											●	
	Caramel milk tea		●																											●	
	Chinese mesona jelly milk tea		●																											●	
	Oolong milk tea		●																											●	
	Jasmine milk tea		●																											●	
Chai milk tea		●																											●		
MILK · SOYMILKS	Ten brown sugar cream milk		●																												
	Brown sugar milk		●																												
	Taro milk		●																												
	Sweet potato milk		●																												
	Chocolate cocoa milk		●																											●	
	Matcha milk		●																											●	
	Strawberry milk		●																												
	Ten brown sugar cream soymilk		●																												
	Brown sugar soymilk		●																												
	Taro soymilk		●																												
JUICE · LASSIS	Mango juice																														
	Mango lassi		●																												
	Strawberry lassi		●																												
	Mango soda																														
SODAS	Pineapple & passion fruit soda																														
	Strawberry soda																														
	Lemon soda																														
SMOOTHIES	Taiwan sweets smoothie		●																											●	
	Ten milk tea smoothie		●																											●	
	Mango smoothie																													●	
	Chocolate cocoa smoothie		●																											●	
TAIWANESE TEAS with nata de coco	Grapefruit tea																													●	
	Pineapple & passion fruit tea																													●	
	Mango jasmine tea																													●	
	Peach oolong tea																													●	
	PAssion fruit jasmine tea																													●	
TABLE FOR TWO not include tapioca	Lemon jasmine tea																													●	
	Peach oolong tea																													●	
TOPPINGS	Jasumine tea																													●	
	Tapioca double																														
	Chinese mesona jelly																													●	
	Whipped cream		●																												
	Pineapple nata de coco																													●	
	Tofu pudding																														
	Almond tofu pudding		●																												
	Small taro ball																														
	Taro ball																														
	Taro																														
	Sweet potato																														
	Coix seeds					※1																									
	Red beans																														
	Peanuts																														
	Mango																														
	Mango ice cream																														
Cheese cream		●																													

※1 People who have wheat allergies very rarely cause allergy symptoms when eat coix seeds.

※Menus may differ in different branches.

※There is a possibility that use common cookware.Please inquire when you order.

△ : Malic acid

Taiwan ten cafe
 [SWEETS] Allergies information

Category	Product name	8 specified ingredients								20 equivalent specified ingredients																			
		egg	milk	wheat	buck wheat	peanut	shrimp	crab	walnut	sesame	soybean	gelatin	orange	peach	apple	kiwi fruit	banana	almond	abalone	squid	salmon roe	cashew nut	beef	salmon	mackerel	chicken	pork	matsutake mashroom	yam
TARO BALLS	Taro ball & sweet potato																												
	Taro ball & beans			※coix seeds		●																							
	Taro ball & chinese mesona jelly		●											△															
HEALTHY SWEETS TOFU PUDDINGS	Special tofu pudding			※coix seeds		●								△															
	Taro ball tofu pudding					●																							
	Peanuts tofu pudding					●																							
	Healthy sweets tofu pudding																												
	Mango tofu pudding														△														
ALMOND TOFU PUDDINGS	Almond tofu pudding		●																										
	Taro ball almond tofu pudding		●																										
	Strawberry almond tofu pudding		●																										
	Mango snow ice	●	●												△														
TAIWANESE SNOW ICES	Strawberry snow ice	●	●																										
	Matcha snow ice	●	●												△														
	Taiwanese plane castella	●	●	●																									
TEN TAIWANESE CASTELLAS	Taiwanese plane castella plate	●	●	●																									
	Taiwanese Earl Grey castella	●	●	●																									
	Traditional Pineapple cake	●	●	●																									
PINEAPPLE CAKES	Classic pineapple cake	●	●	●																									
	Cranberry & walnut cake	●	●	●																									

※People who have wheat allergies very rarely cause allergy symptoms when eat coix seeds.
 ※Menus may differ in different branches.
 ※There is a possibility that use common cookware.Please inquire when you order.
 △ : Malic acid

Taiwan ten cafe

[FOOD] Allegies information

Category	Product name	8 specified ingredients								20 equivalent specified ingredients																		
		egg	milk	wheat	buck wheat	peanut	shrimp	crab	walnut	sesame	soybean	gelatin	orange	peach	apple	kiwi fruit	banana	almond	abalone	squid	salmon roe	cashew nut	beef	salmon	mackerel	chicken	pork	matsutake mashroom
RICE DISHES	Braised pork rice			●							●											▲			▲	●		
	Taiwanese mixed rice	●	●	●						●	●	●										▲		●	●	●		
NOODLES	Beef noodles			●						▲	●											●			▲	▲		
	Soupless noodles			●							●											▲			▲	●		
	Tainan danzai noodles		●	●					●		●											●			●	●		
	Tainan danzai noodles (EXPOCITY)	●	●	●					●		●											●			●	●		
	Spicy sesame noodles	●		●						●	●														●	●		
	Hot and sour soup noodle	●		●						●	●														●	●		
	Taiwanese mixed noodles	●	●	●						●	●	●											▲		●	●	●	
SOUPS	Salted soybean milk	▲		●					●	●	●																	
	Hot and sour soup noodle	●		●						●	●														●	●		
	Boiled dumpling soup		●	●						●	●														●	●		
	Set soup		●	●						●	●												●		●	●		
TOPPINGS	Boiled dumpling			●						●	●															●		
MINI SWEETS	Mini almond tofu pudding		●								●	●																
	Mini peanuts tofu pudding										●																	
	Mini taro ball & chinese mesona jelly		●								●																	

※People who have wheat allergies very rarely cause allergy symptoms when eat coix seeds.
 ※Menus may differ in different branches.
 ※There is a possibility that use common cookware.Please inquire when you order.
 △ : Malic acid
 ▲ : Ingredients and allergens may differ in different branches.Please inquire when you order.